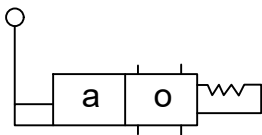


Description

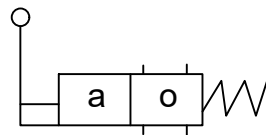
Lever Operated Directional control Valve Model 4DL10, construction of this valve is spool type, lever operated valve. Completely encapsulated mechanism for protection against dirt. Five chamber design for better reduction in dynamic forces and longer valve life. It is available as spring centered or detented model, operating head can be rotated by 90° x 4 around spool axis for flexibility in mounting. All spool and body are interchangeable, easy to maintenance.

Hydraulic Symbol

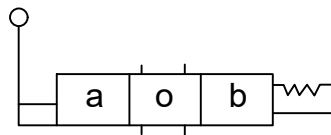
2 position detented



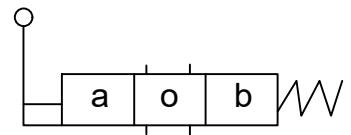
2 position spring offset



3 position detented



3 position spring offset



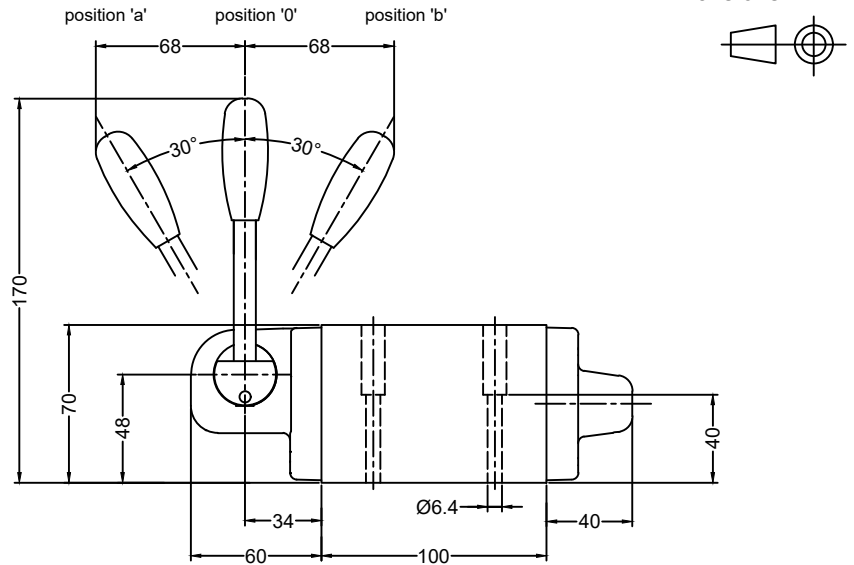
Technical Specification

Design	:	Spool type.
Mounting interface	:	Threaded port or Subplate body - As per ISO 4401-AC-05-4-A & IS 10187-10 mm diameter nominal port
Mounting position	:	Optional, horizontal spool axis preferred.
Flow Direction	:	As per spool type.
Maximum Working Pressure	:	For Port P, A & B - 350 bar (Standard valve) For Port P, A & B - 700 bar (High Pressure valve) For Port T - 100 bar
		Pressure drop in the tank line adversely affect the returning speed of the cylinder, Hence must be kept as low as possible
Hydraulic medium	:	Mineral Oil.
Viscosity range	:	10cSt to 380cSt.
Temperature range	:	-20°C to +80°C
Mass (approx)	:	6 kg.

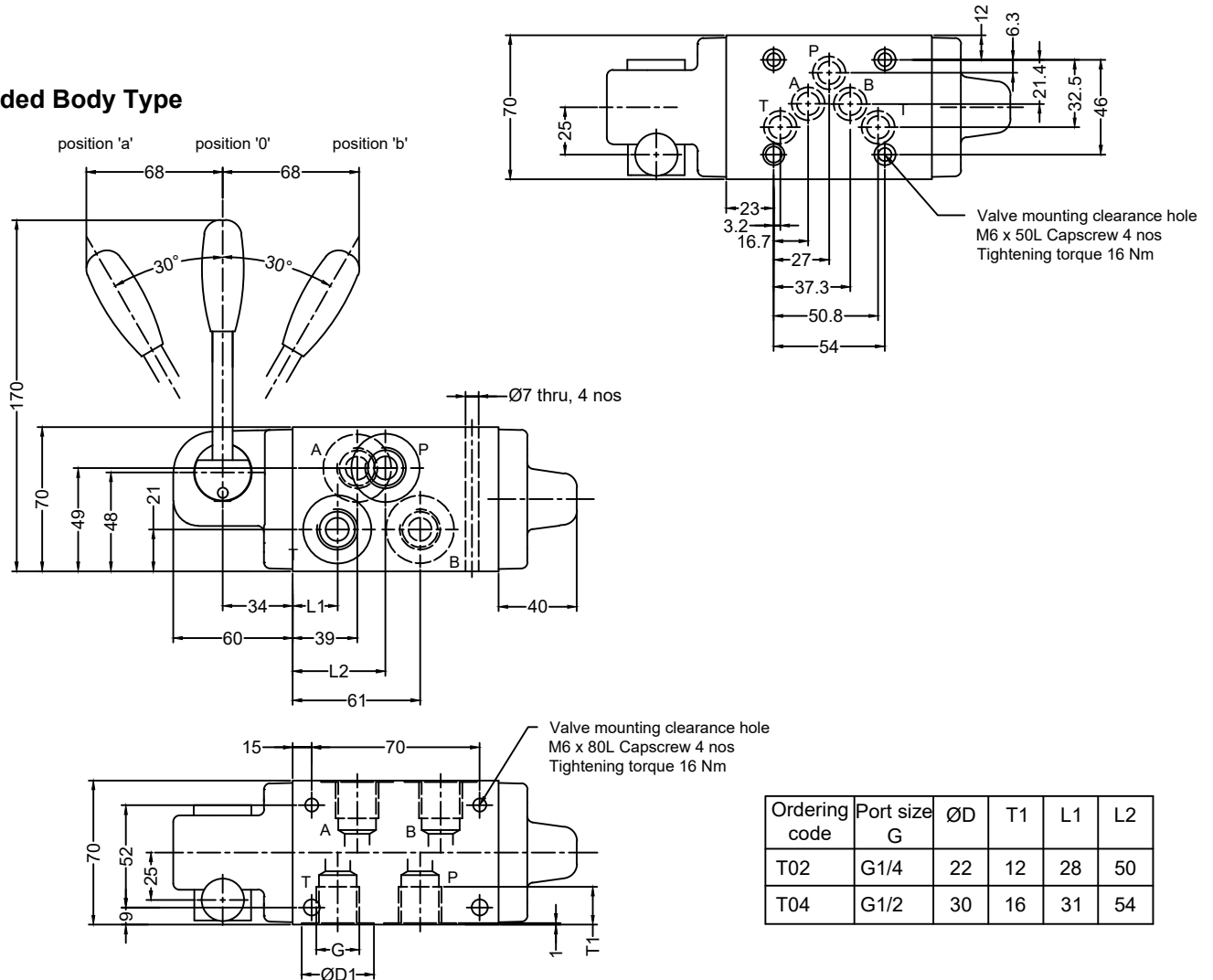
Unit Dimension

Dimensions in mm

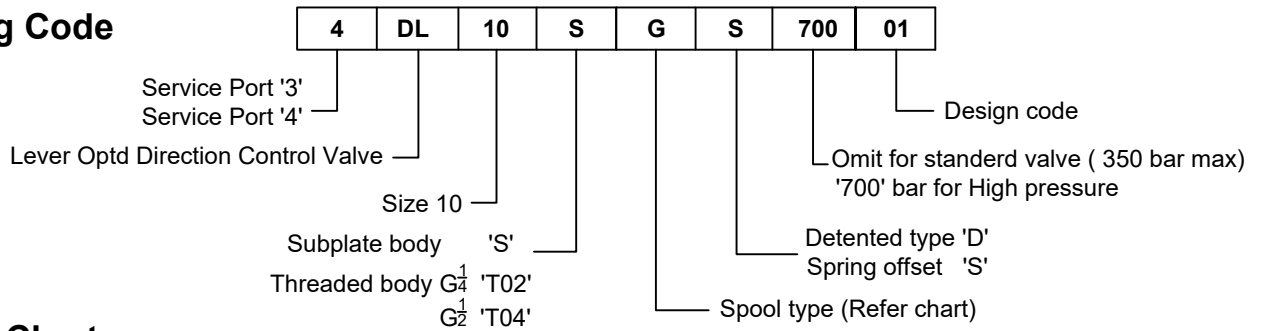
Subplate Body Type



Threaded Body Type



Ordering Code



Spool Chart

Type	Symbol	Crossover
	a o b A B 	
A		
C		
D		
E		
F		
G		
H		
J		
L		
M		
P		
Q		
U		
W		