

Description

Pilot operated check valve models CI**** allows free flow in the direction from Port A to Port B and offers leak free closure in opposite direction

Reverse flow can be achieved by applying Pilot pressure to Port X.

Construction of valve is seat type, with decompression facility.

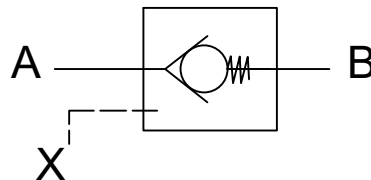
Mounting style are threaded and subplate mounting.

There are two types, Type A and Type B.

Type A Consist Decompression poppet ratio 16:1 and Main poppet ratio 2:1.

Type B Consist Decompression poppet ratio 4:1 and Main poppet ratio 1:2.

Hydraulic Symbol



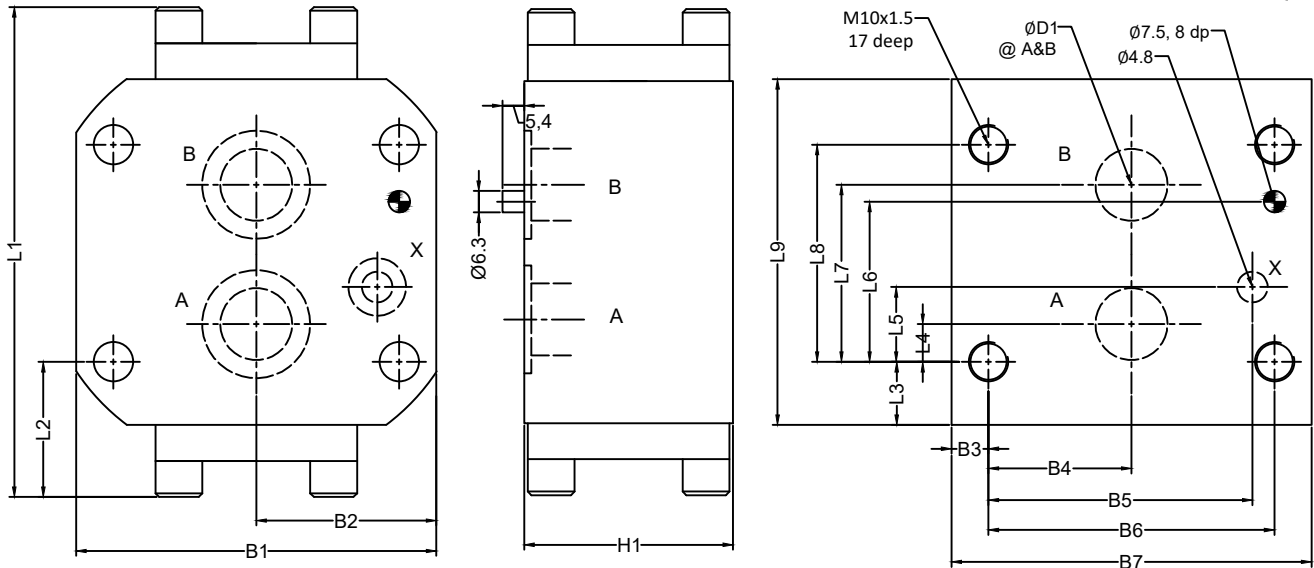
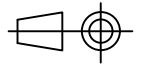
Technical Specification

Design	:	Seat type valve, with decompression facility.
Mounting interface	:	Threaded port - Factory standers or Subplate body - As per ISO 5781
Mounting position	:	Optional
Flow Direction	:	Free flow from A to B port, Pilot flow from B to A port.
Working Pressure	:	For Port A, B & X port 315 bar.
Cracking pressure	:	1 bar
Area Ratio	:	Type A Consist Decom poppet ratio 16:1 and Main poppet ratio 2:1. Type B Consist Decom poppet ratio 4:1 and Main poppet ratio 1:2.
Pilot pressure required for X port	:	To open main poppet for type A $>P_a/2+P_b/2+0.5$, Type B $>2P_b-P_a+2$ To open decom poppet for type A $>P_a+P_b/16+0.5$, Type B $>P_a/1.5+P_b/4+2$ P_a = Pressure at port A (bar), P_b = Pressure at port B (bar)
Flow handling capacity	:	CI10- 80 l/min, CI20- 160 l/min, CI30- 350 l/min
Hydraulic medium	:	Mineral Oil.
Viscosity range	:	10cSt to 380cSt.
Temperature range:	:	-20°C to +80°C
Mass	:	CI10S - 2 kg, CI10T- 3 kg, CI20S - 4 kg, CI20T - 5 kg, CI30S - 6.5 kg, CI30T - 7.5 kg

Unit Dimension

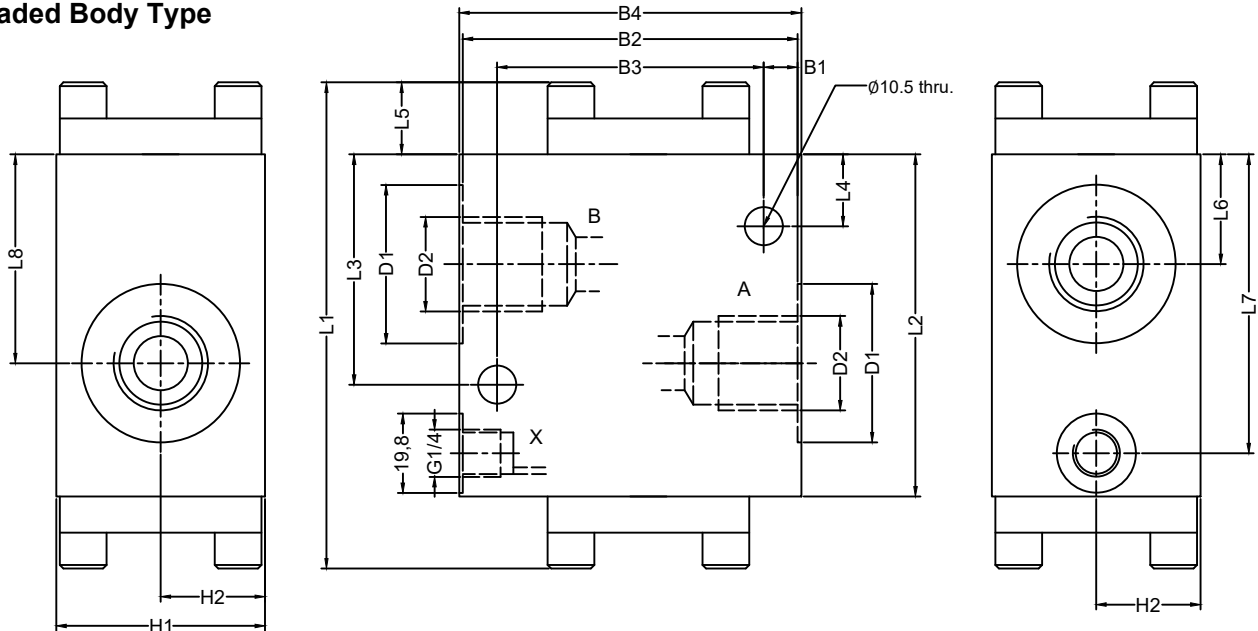
Dimensions in mm

Subplate Body Type



Size	L1	L2	L3	L4	L5	L6	L7	L8	L9	B1	B2	B3	B4	B5	B6	B7	H1	ØD1	Valve Fixing S.H.C	Toque Nm
10	116	36.5	18.5	7.1	21.4	31.8	35.7	42.9	80	90	45	9.2	33.3	58.7	66.7	85	50	13	M10x45L	77
20	136	37.5	17.5	11.1	20.8	44.5	49.2	60.3	96	100	50	10.3	39.7	73	79.4	100	58	22	M10x50L	77
30	173	44.5	15.5	16.7	24.6	42.1	62.7	67.5	84.1	120	60	11.6	48.4	92.2	96.8	120	80	31	M10x64L	77

Threaded Body Type



Size	L1	L2	L3	L4	L5	L6	L7	L8	B1	B2	B3	B4	H1	H2	ØD1	ØD2
10	115	85	52	18.5	17	29	67.5	46	8.3	83	66.5	85	50	25	30	G1/2
20	135	95	64	20	20	30.5	83	58	9.5	93	74	95	58	29	44	G1
30	173	120	89	15.5	29	36	105	70	9.5	115	97	120	80	40	60	G1 1/2

Ordering Code