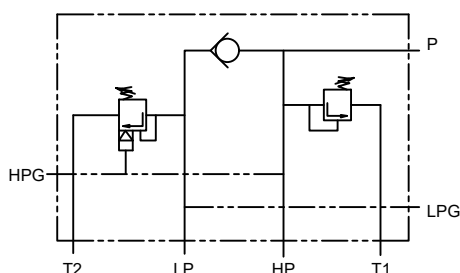


### Description

Designed to control Double pump of Hi-Low system. Unloads low pressure pump when system pressure rises above the pressure set on unloader valve. Relieves high pressure pump when system pressure reaches the value.

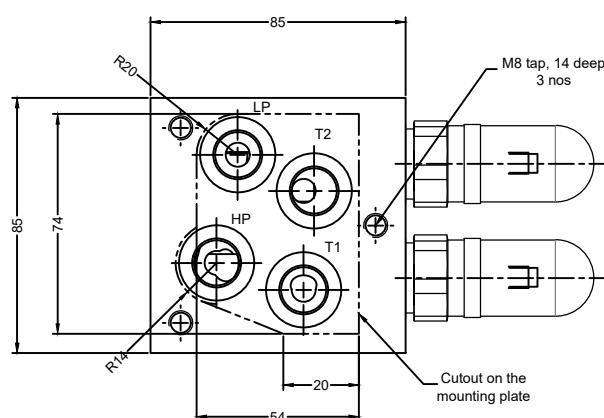
**Hydraulic Symbol** Model : PCM06/06



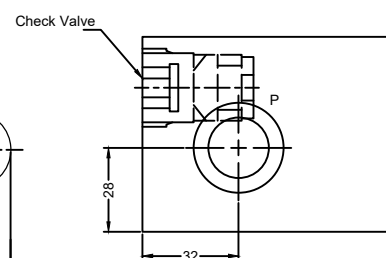
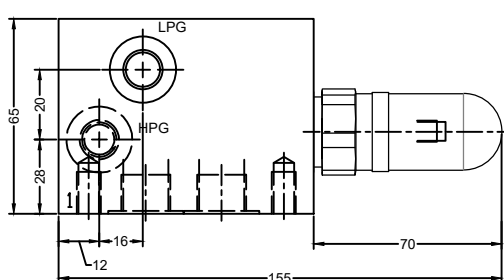
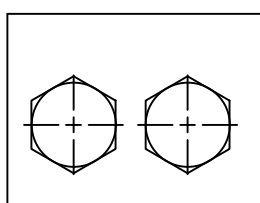
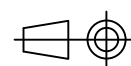
### Connection Details

- HP --- High pressure pump connection  
LP --- Low pressure pump connection  
P --- Out let connection  
HPG -- Gauge connection on high pressure pump line  
LPG -- Gauge connection on low pressure pump line  
T1 --- Tank connection of high pressure relief valve  
T2 --- Tank connection of low pressure unloader valve

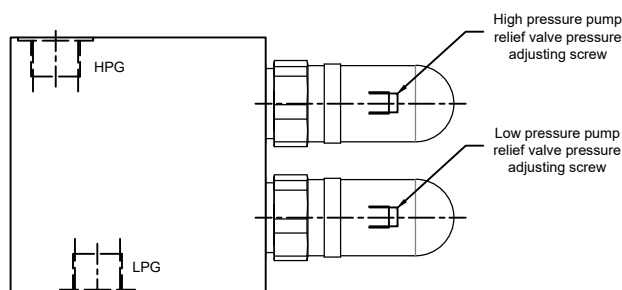
**Unit Dimensions**  
**Model :PCM 06/06**



**Dimensions in mm**



Port Detail	
HP	G3/8
LP	G3/8
P	G1/2
HPG	G1/4
LPG	G1/4
T1	G3/8
T2	G3/8



## Technical Specification

Design	:	PCM 06/06 are Direct acting poppet type high pressure relief valve. Two stage poppet type low pressure unloading valve,
Mounting interface	:	Threaded body (Factory standard)
Mounting position	:	Optional
Flow direction	:	As per hydraulic symbol
Opp Pressure for	:	Low pressure pump port 100 bar max. High pressure pump port 100,200 and 315 bar
Flow handling capacity	:	PCM06/06 25 l/min for high pr. 25 l/min for low pr.
Hydraulic medium	:	Mineral oil
Viscosity range	:	10 cSt to 100 cSt
Temperature range	:	-20°C to +80°C
Fluid cleanliness req.	:	ISO 4406 20/18/15 or better

## Ordering Code

