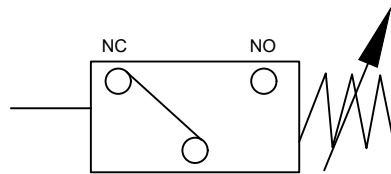


Description

Pressure Switch Model 1PS, Construction of this valve is spring loaded sealed piston type. Encapsulated design for protection against dust. Valve mounting interface subplate type. There are 6 pressure range is available, which can adjustable upto 10, 50, 100, 200, 350 and 420 bar. Its come with LED connector i.e. 230 VAC or 24 VAC/VDC.

Hydraulic Symbol



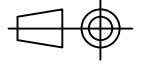
Technical Specification

Design	:	Spring loaded sealed piston type.
Mounting interface	:	Subplate Mounting, Factory Standard
Mounting position	:	Optional
Pressure range available	:	Adjustable upto 10, 50, 100, 200, 350 and 420 bar
Switching Frequency	:	80 Cycle / min
Life	:	1 million cycles minimum
Electrical rating	:	UL / C - UL rating - 6A, 125 / 250 VAC EN / EC rating - 6(3)A, 250V ~ 5E4 T85 approved
Electrical connector	:	Plug - in connector conforms to DIB43650, ISO 4400
Hydraulic medium	:	Mineral Oil.
Viscosity range	:	10cSt to 380cSt.
Temperature range	:	-20°C to +80°C
Mass (approx)	:	1PS** - 0.5 kg, 1PS10 - 0.4 kg
Pressure Setting	:	

Model		Increasing Pressure		Decreasing Pressure		Operating Pr.
		min	max	min	max	max
1PS10	10	4	10	2.5	7	100
1PS	50	8	50	5	44	420
	100	12	100	10	90	
	200	20	200	15	185	
	350	25	350	20	330	
	420	28	420	22	390	

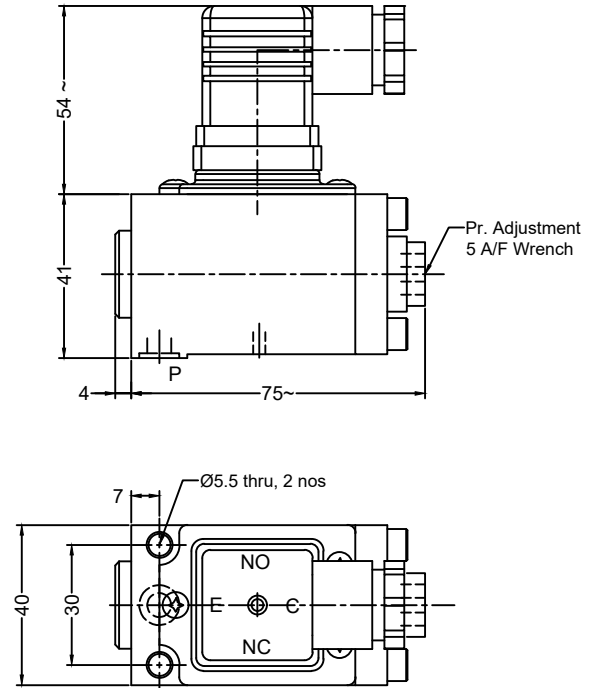
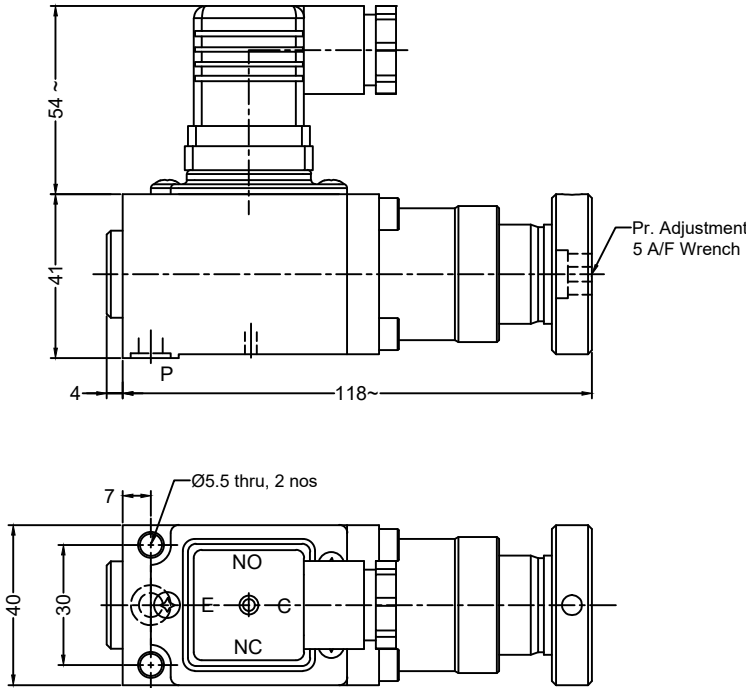
Unit Dimension

Dimensions in mm

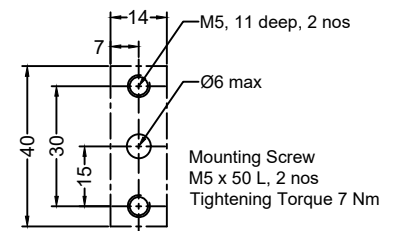


Model : 1PS

Model : 1PS10



Mounting Interface for 1PS & 1PS10



Ordering Code

