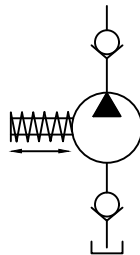


Description

Pumping element model 1R is as piston type pumping element, supplied with its Suction valve, Delivery valve and a spring loaded piston as a single unit. It is made for supplying small volume of lubricating oil under high pressure. For its working, the element must remain submerged in the oil.

There are seven type of pumping elements, each having different displacement and pressure rating.

Hydraulic Symbol



Model : Pumping element 1R

Technical Specification

Design	:	Reciprocating Spring loaded piston, valve controlled and oil immersed.
Mounting interface	:	Factory standard, face mounting.
Speed range	:	300 to 2000 rpm
Flow and Pressure	:	Refer Performance table.
Hydraulic medium	:	Mineral oil
Viscosity range	:	10 cSt to 100 cSt
Temperature range	:	-20°C to +80°C
Fluid cleanliness req.	:	ISO 4406 20/18/15 or better
Mass	:	0.3 kg

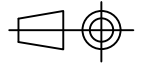
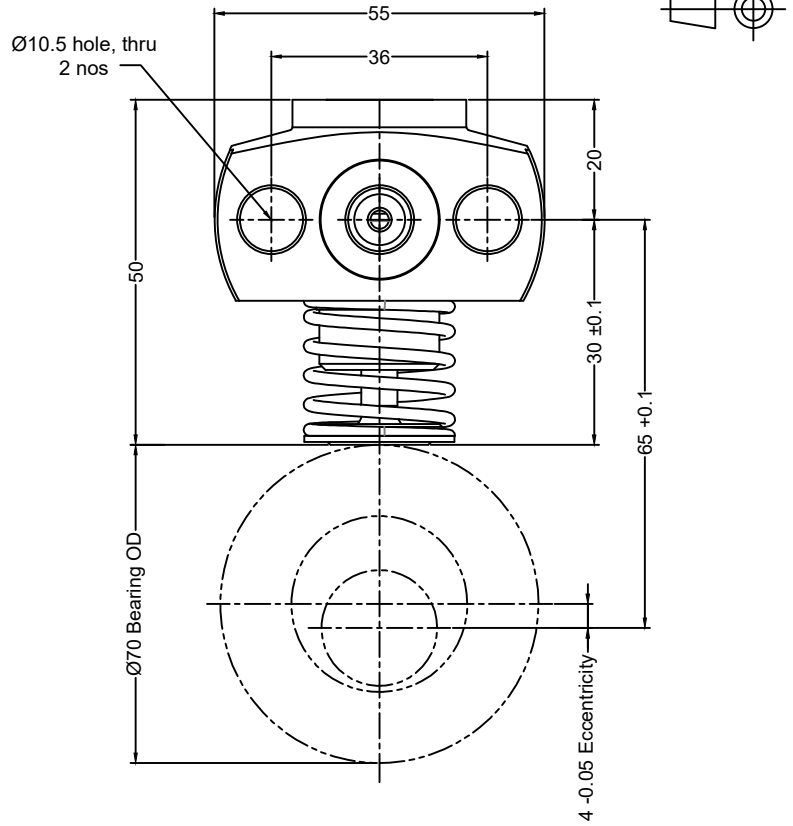
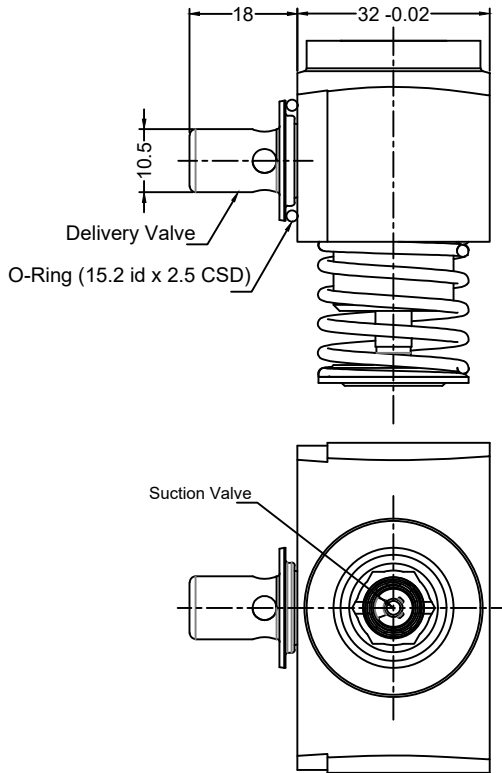
Performance Table

Model	Geometrical displacement in cm ³ /Stroke	Max Operating pressure in bar	Delivery flow l/min		Force required to operate piston at rated pressure in N
			1450 s/min	2000 s/min	
1R- Z	0.23	700	0.31	0.43	1980
1R- A	0.40	550	0.55	0.75	2765
1R- B	0.63	450	0.86	1.18	3535
1R- C	0.90	350	1.23	1.70	3960
1R- D	1.06	300	1.53	1.99	3982
1R- E	1.23	250	1.78	2.31	3848
1R- F	1.41	200	2.04	2.65	3534

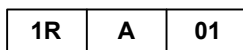
Dimensions in mm

Unit Dimension

Model : 1R Pumping Element



Ordering Code



Pumping Element ——— Design code
 Type of Element ———
 Z,A,B,C,D,E,F

Element mounting details

