

Description

Manifold block is a general purpose manifold having facility of mounting Direction Control Valve (conforming to ISO4401-AC-05-4-A) and Direct acting pressure relief valve (conforming to factory standards DPR10 cavity). Manifold comes with one inlet, two outlet and one gauge and one tank port. Maximum working pressure 350 bar.

Refer Circuit Diagram for internal connections.

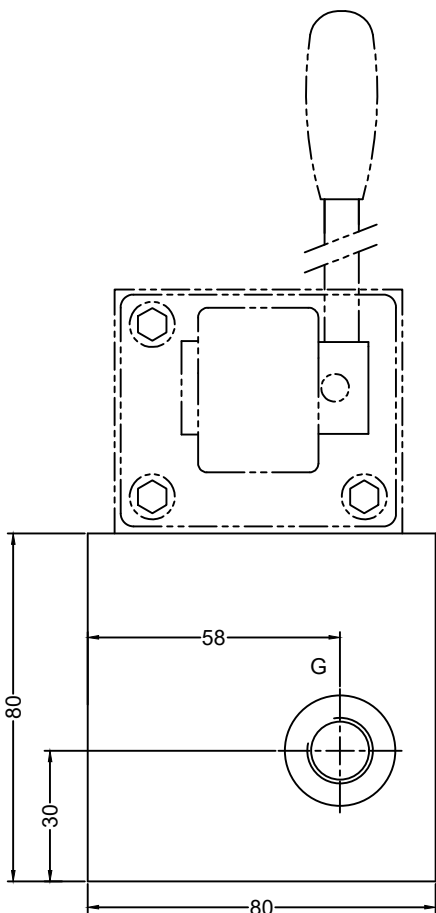
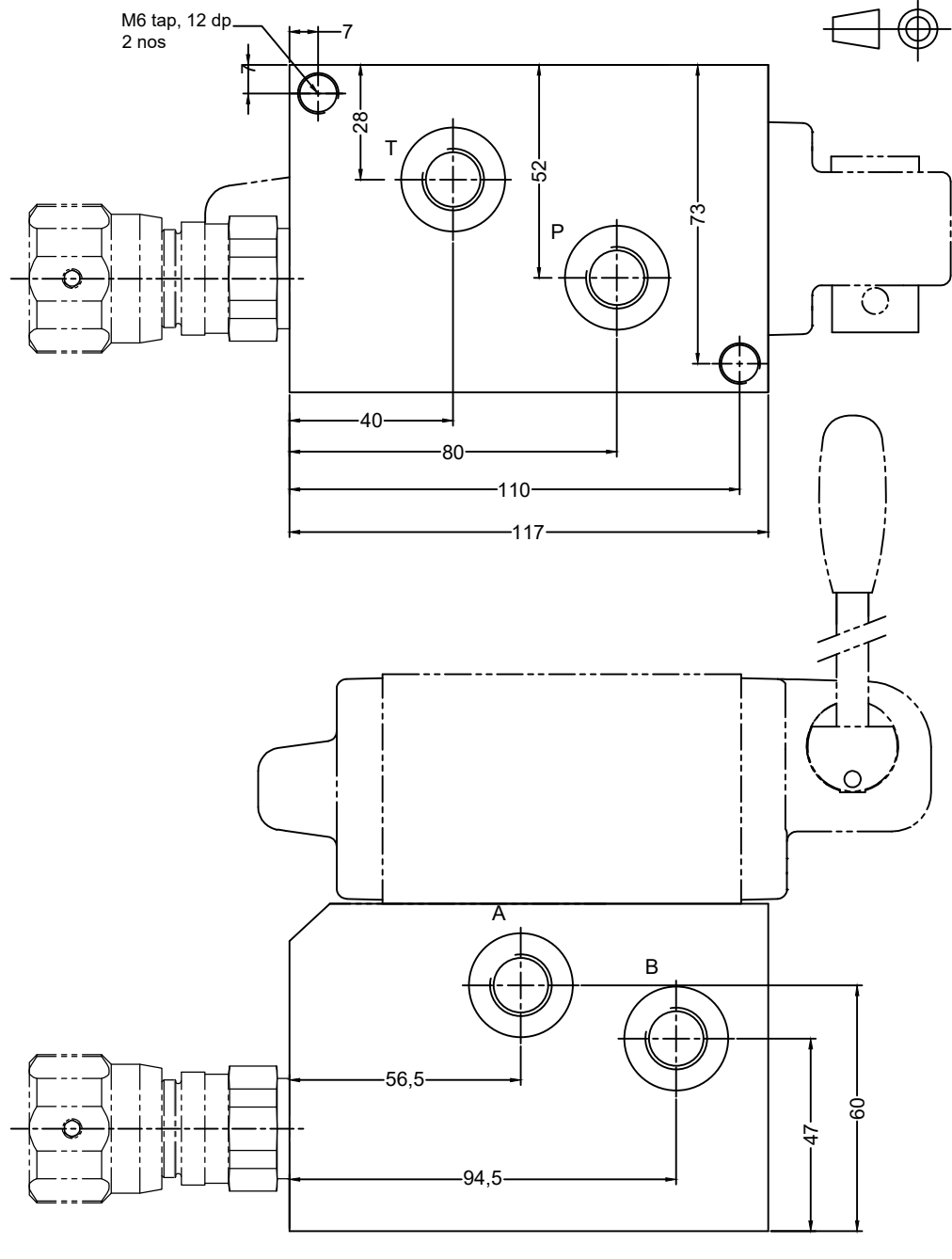
NOTE : Relief valve Cartridge and Direction control valve to be procured separately as needed.

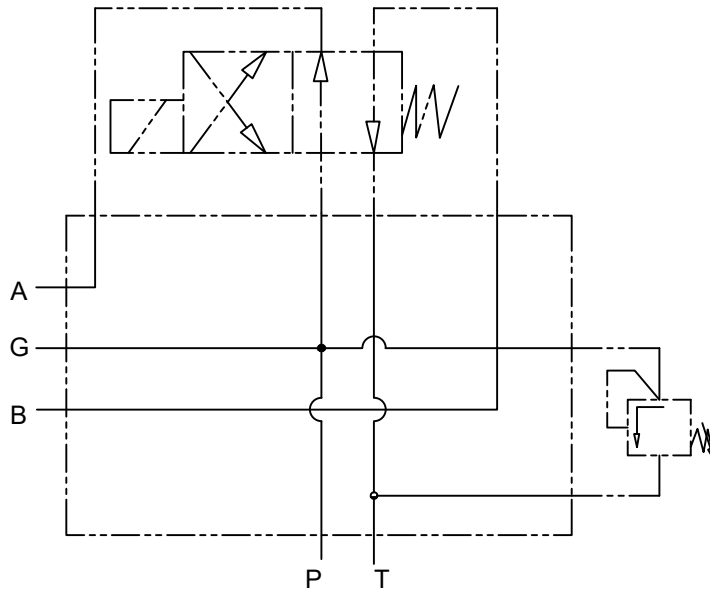
Unit Dimension

Dimensions in mm

Port details

- P, T, A & B - G1/2 " BSP
- G - G1/4 " BSP



Hydraulic Symbol**P : Pump inlet port****T : Tank port****A : Outlet port****B : Outlet port****G : Gauge port****Note :** G port to be plugged using G1/4 " Elastomeric plug if port not in use**Ordering Code**